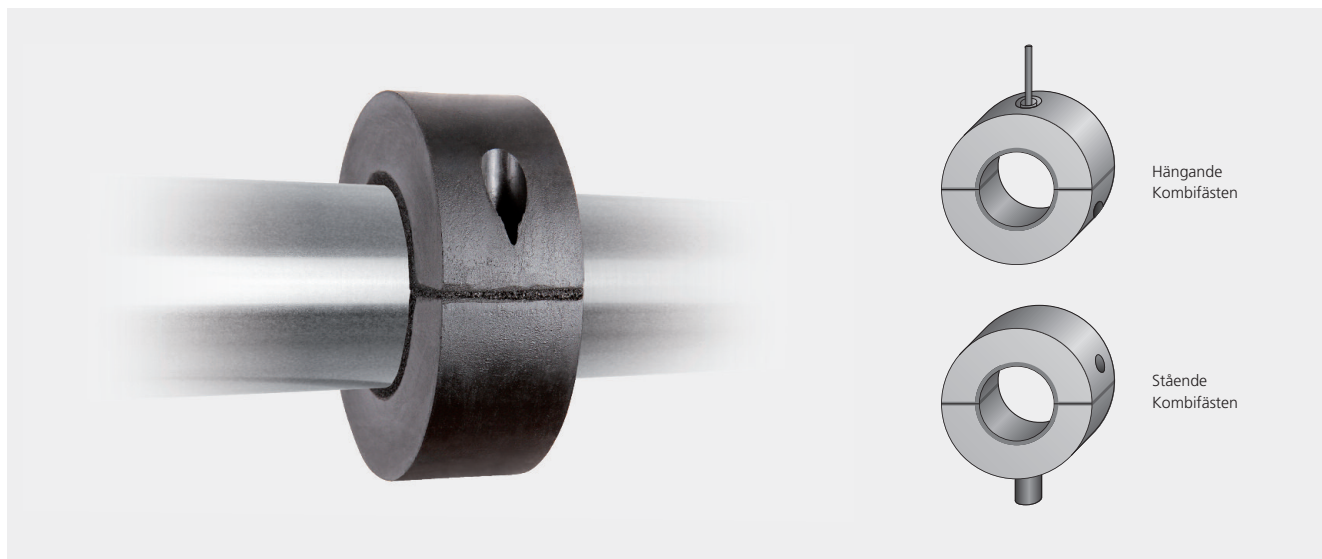


IP NORM 175 EXPRESS



Dimension	Rördiameter	Isoleringstjocklek	Ytterdiameter	Bredd	Kombifästen
17/30	17,2	30	88	40	G $\frac{1}{2}$ " / M10 / M8
18/30	18,0	30	88	40	G $\frac{1}{2}$ " / M10 / M8
21/30	21,3	30	88	40	G $\frac{1}{2}$ " / M10 / M8
22/30	22,0	30	88	40	G $\frac{1}{2}$ " / M10 / M8
27/30	26,9	30	88	40	G $\frac{1}{2}$ " / M10 / M8
28/30	28,0	30	88	40	G $\frac{1}{2}$ " / M10 / M8
33/30	33,7	30	96	40	G $\frac{1}{2}$ " / M10 / M8
35/30	35,0	30	96	40	G $\frac{1}{2}$ " / M10 / M8
42/30	42,4	30	104	40	G $\frac{1}{2}$ " / M10 / M8
48/30	48,3	30	102	40	G $\frac{1}{2}$ " / M10 / M8
54/30	54,0	30	116	40	G $\frac{1}{2}$ " / M10 / M8
57/30	57,0	30	116	40	G $\frac{1}{2}$ " / M10 / M8
60/30	60,3	30	123	50	G $\frac{1}{2}$ " / M10 / M8
64/30	63,5	30	123	50	G $\frac{1}{2}$ " / M10 / M8
70/30	70,0	30	132	50	G $\frac{1}{2}$ " / M10 / M8
76/30	76,1	30	132	50	G $\frac{1}{2}$ " / M10 / M8
89/30	88,9	30	150	50	G $\frac{1}{2}$ " / M10 / M8
108/40	108,0	40	189	60	G $\frac{1}{2}$ " / M10 / M8
114/40	114,3	40	195	60	G $\frac{1}{2}$ " / M10 / M8
133/40	133,0	40	215	60	G $\frac{1}{2}$ " / M10 / M8
139/40	139,7	40	221	60	G $\frac{1}{2}$ " / M10 / M8
159/40	159,0	40	239	60	G $\frac{1}{2}$ " / M12
168/40	168,3	40	250	60	G $\frac{1}{2}$ " / M12
204/60	204,0	60	341	100	$\frac{3}{4}$ " / M16
219/60	219,1	60	341	100	$\frac{3}{4}$ " / M16